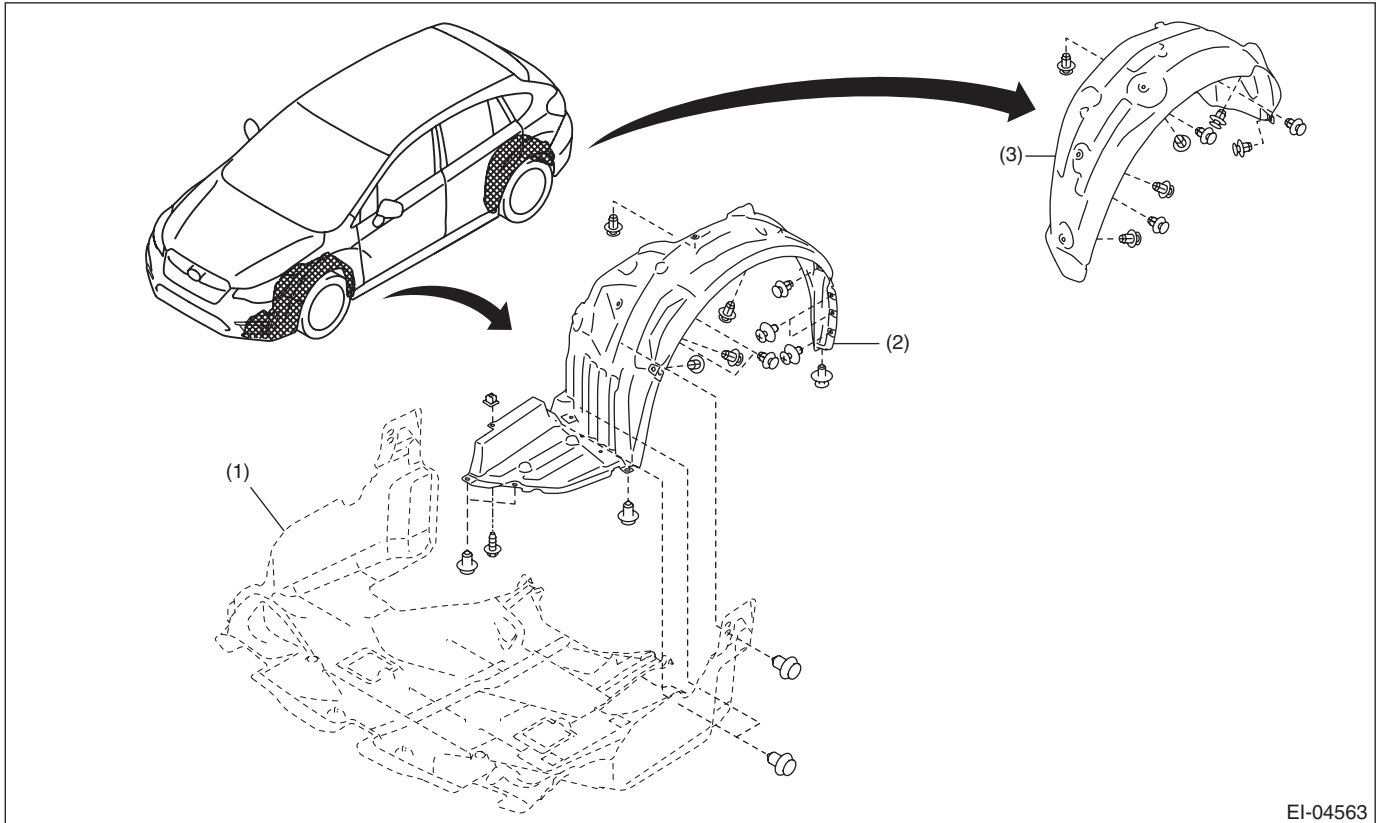


## 3. Mud Guard

### A: REMOVAL

- 1) Lift up the vehicle.
- 2) Remove the wheels.
- 3) Remove the screws and clips to remove the mud guard.



EI-04563

(1) Under cover - front

(2) Mud guard - front

(3) Mud guard - rear

### B: INSTALLATION

Install each part in the reverse order of removal.

#### **Tightening torque:**

**Except for C4 model: 120 N·m (12.24 kgf-m, 88.5 ft-lb)**

**C4 model: 100 N·m (10.20 kgf-m, 73.8 ft-lb)**